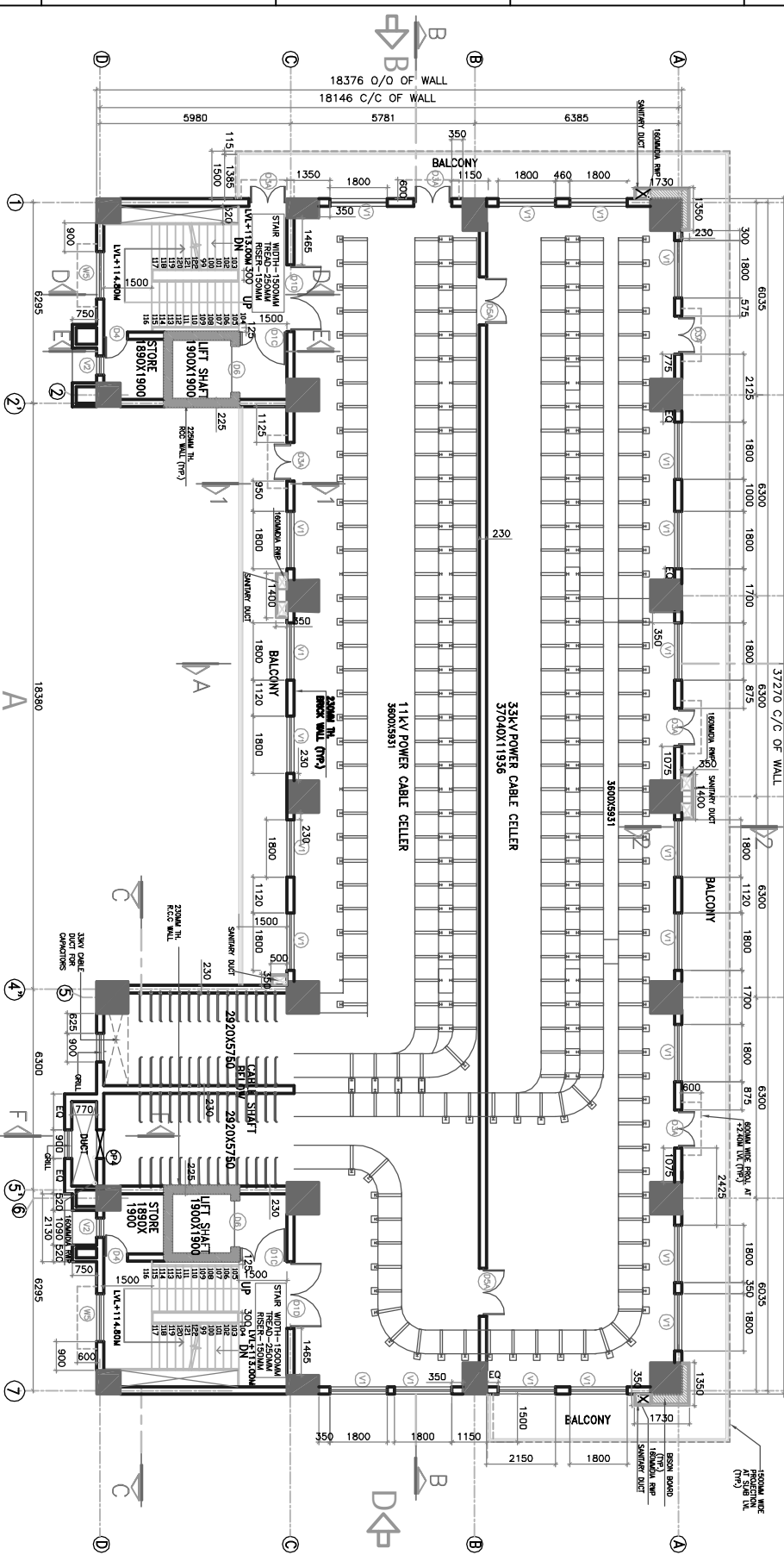
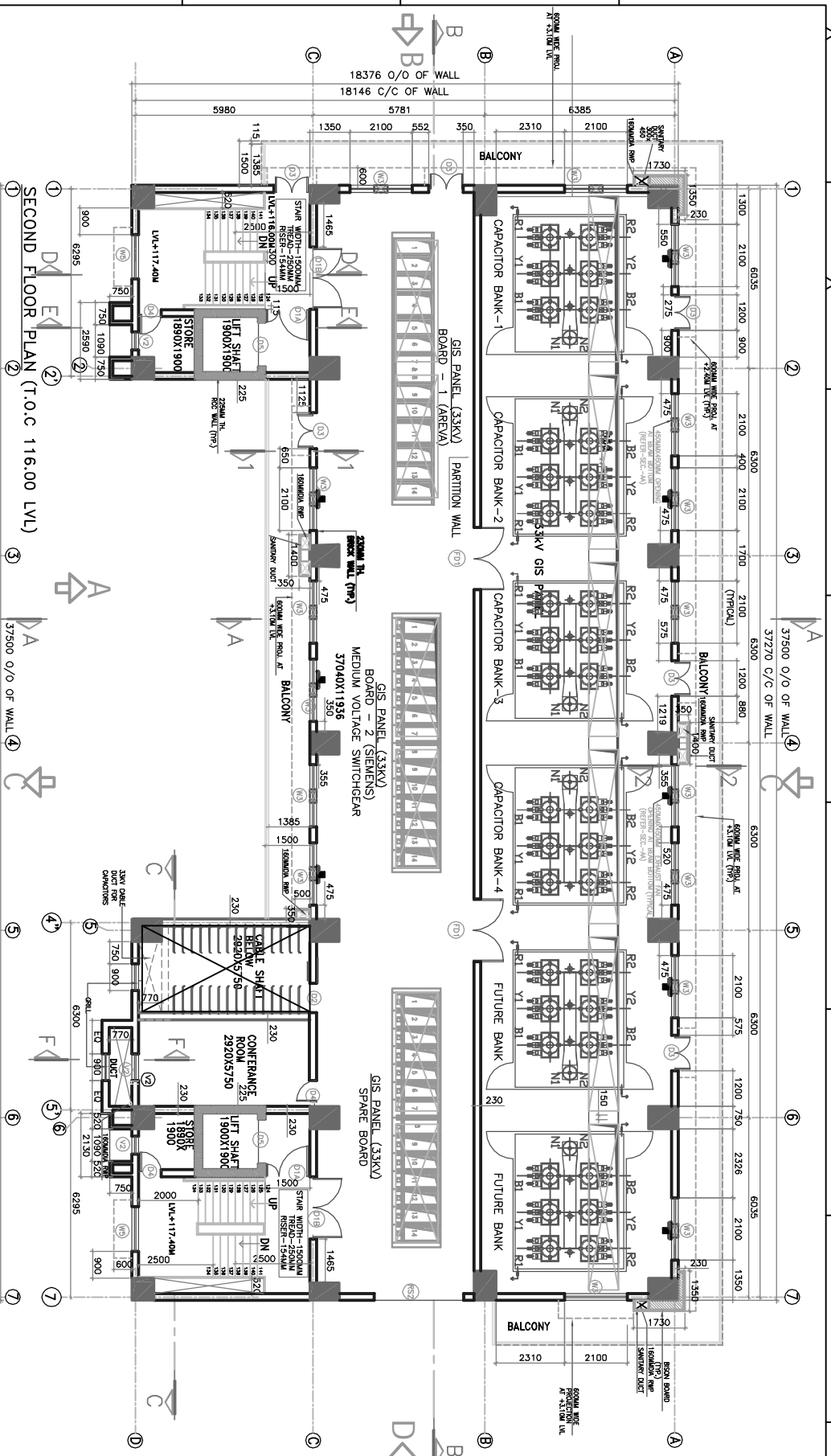


NOTES:-
 ROAD = 100.150
 FGL = 100.150
 HFL = 101.50
 FFL = 102.00

NOTES:-
 1. ALL MEASUREMENTS MUST BE CHECKED AND VERIFIED AT SITE ANY DISCREPANCY FOUND TO BE NOTIFIED TO THE ARCHITECT BEFORE EXECUTION.
 2. ALL DIMENSIONS ARE IN MM & ALL LEVELS ARE IN METERS UNLESS OTHERWISE SPECIFIED.

REFERENCE DRAWINGS:-

1.	PLAN LAYOUT GROUND FLOOR	A2-TD-530-C122
2.	PLAN LAYOUT FIRST FLOOR	A2-TD-530-C124
3.	PLAN LAYOUT SECOND FLOOR	A2-TD-530-C125
4.	TERRACE PLAN	A2-TD-530-C126
5.	SECTIONS	-



SCHEDULE OF OPENING

S.NO.	TYPE	SIZE	SILL LVL.	UNTEL LVL.	NO.	REMARK
1	RS2	3000X3100	-	3.10M	01	ROLLING SHUTTER
2	D1A	1500X2400	-	2.40M	02	A.U. PARTY GLAZED PARTY PANEL DOOR (DOUBLE SHUTTER)
3	D1B	2100X2400	-	2.40M	02	A.U. PARTY GLAZED PARTY PANEL DOOR (DOUBLE SHUTTER)
4	D1C	1500X2100	-	2.10M	02	A.U. PARTY GLAZED PARTY PANEL DOOR (DOUBLE SHUTTER)
5	D1D	2100X2100	-	2.10M	02	A.U. PARTY GLAZED PARTY PANEL DOOR (DOUBLE SHUTTER)
6	D2	1000X2400	-	2.40	01	M.S SLIDING DOOR (DOUBLE SHUTTER)
7	D3	1200X2400	-	2.40M	06	A.U. (DECORATIVE) PANEL DOOR (DOUBLE SHUTTER)
8	D3A	1200X2100	-	2.10M	06	A.U. (DECORATIVE) PANEL DOOR (DOUBLE SHUTTER)
9	D4	750X2100	-	2.10M	02	A.U. PARTY DOOR (DOUBLE SHUTTER)
10	D5	1500X2400	-	2.40M	02	A.U. PARTY DOOR (DOUBLE SHUTTER) (AS PER VENDOR)
11	D6	1500X2400	-	2.10M	02	A.U. PARTY DOOR (DOUBLE SHUTTER) (AS PER VENDOR)
12	D6A	1500X2100	-	2.10M	02	A.U. PARTY GLAZED PARTY PANEL DOOR (DOUBLE SHUTTER)
13	F01	2100X2400	-	2.40	02	FIRE DOOR (DOUBLE SHUTTER)
14	W3	2100X2100	1.00M	3.10M	16	A.U. PARTY SLIDING PARTY FIXED GLAZED WINDOW
15	W5	1500X1500	BEAM BOTTOM	2.40M	18	A.U. SLIDING WINDOW
16	V1	1800X600	1.80M	2.40M	21	A.U. FIXED GLAZED VENTILATOR + EXHAUST FAN
17	V2	600X600	1.50M	2.10M	21	A.U. TOP HUNG VENTILATOR (REFER SEC-D)
18	OP4	900X600	BEAM BOTTOM	-	04	OPENING (REFER SEC-F)

NOTE:-
 50MM FLOOR FINISH TO BE CONSIDERED FROM UNFINISHED LEVEL

Reliance Infrastructure
 Aadi Dhillon&Associates Group

SHAH & TALATI CONSULTING ENGINEERS
 9, KIRTI TOWERS, TILAK ROAD
 BORIVALI, MUMBAI - 400 075
 PHONE : 02267 2427729
 FAX : 02267 2420537
 E-MAIL : se@shahandtalati.com

ABB LIMITED

220KV BORIVALI SUB STATION
 GIS BUILDING

FIRST FLOOR PLAN &
 SECOND FLOOR PLAN

3UIND90207E1009